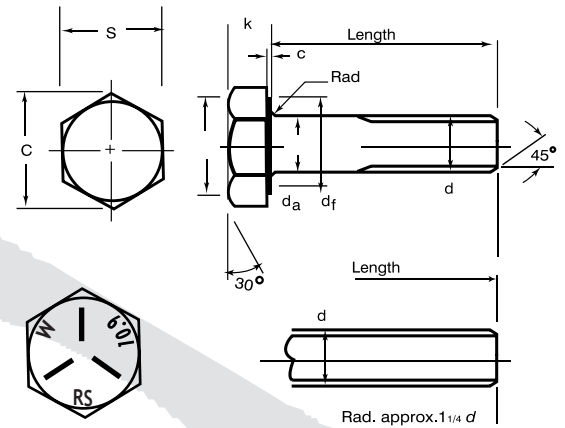




HIGH STRENGTH FRICTION GRIP BOLT & NUT - PART II

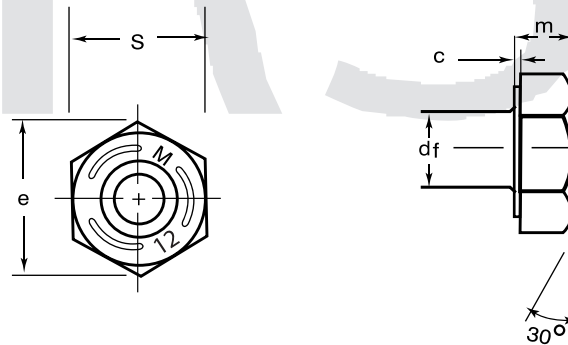
**ROCKSIDE
EXPORT LIMITED**

Standard Specification : BS 4395 Part 2
 Equivalent to DIN 6914, 6915
 Material : Alloy Steel
 Strength Grade : Class 10.9
 Threads : 6H of BS 3643 Part 1 & 2
 Surface Finish : Black, Hot Dipped Galvanized



DIMENSIONS HSGF BOLT

Nominal size and thread diameter d	Pitch of thread p	Diameter of unthreaded shank d		Width across flats s		Width across corner		Diameter of washer face dt		Depth of washer face c	Radius under head r		Transition diameter dn	Thickness of head k	
		Max.	Min.	Max.	Min.	Max.	Min.	Max.	Min.		Max.	Min.			
M 12	1.75	12.70	11.30	22	21.16	25.4	23.70	22	19.91	0.4	1.00	0.6	14.7	8.45	7.55
M 16	2.0	16.70	15.30	27	26.16	31.2	29.30	27	24.91	0.4	1.00	0.6	18.7	10.45	9.55
M 20	2.5	20.84	19.16	32	31.00	35.9	35.03	32	29.75	0.4	1.20	0.8	23.24	13.90	12.10
M 22	2.5	22.84	21.16	36	35.00	41.6	39.55	36	33.75	0.4	1.20	0.8	25.24	14.90	13.10
M 24	3.0	24.84	23.16	41	40.00	47.3	45.20	41	38.75	0.5	1.20	0.8	27.24	15.90	14.10
M 27	3.0	27.84	26.16	46	45.00	53.1	50.85	46	43.75	0.5	1.50	1.0	30.84	17.90	16.10
M 30	3.5	30.84	29.16	50	49.00	57.7	55.37	50	47.75	0.5	1.50	1.0	33.84	20.05	17.95
M 36	4.0	37.00	35.00	60	58.80	69.3	66.44	60	57.75	0.5	1.50	1.0	40.00	24.05	21.95



DIMENSIONS HSGG NUT

Nominal size and thread diameter d	Pitch thread p	Width across flats s		Width across CORNER e		Diameter of washer face dt		Depth of washer face e	Thickness of nut m	
		Max.	Min.	Max.	Min.	Max.	Min.		Max.	Min.
M 12	1.75	22	21.6	25.40	23.70	22	19.91	0.4	11.55	10.45
M 16	2.0	27	26.16	31.20	29.30	27	24.91	0.4	15.55	14.45
M 20	2.5	32	31.00	35.90	35.03	32	29.75	0.4	18.55	17.45
M 22	2.5	36	35.00	41.60	39.55	36	33.75	0.4	19.65	18.35
M 24	3.0	41	40.00	47.30	45.20	41	38.75	0.5	22.65	21.35
M 27	3.0	46	45.00	53.10	50.85	46	43.75	0.5	24.65	23.35
M 30	3.5	50	49.00	57.70	55.37	50	47.75	0.5	26.65	25.35
M 36	4.0	60	58.80	69.30	66.44	60	57.75	0.5	31.80	30.20

While every care has been taken in the preparation of the information in this catalogue, the company accepts no liability for any loss or damage either direct or consequential arising out of use this catalogue. This compilation is for reference only, for detail refer relevant Original Standards Manuals.

